

EXTreme LPHPower Connectors

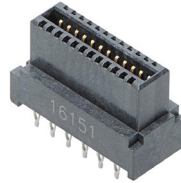


Designed with power blades parallel to the PC board, this mixed high-current power and signal connector system delivers up to 127.0A per linear inch, features a low-profile height for enhanced system airflow, and offers flexible mating options

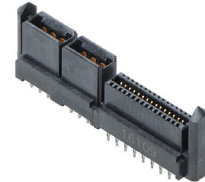
Features and Advantages



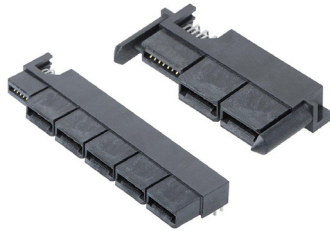
Power-Only Vertical Receptacle



Signal-Only Vertical Receptacle



Hybrid Vertical Receptacle



Hybrid Right-Angle Receptacles



Hybrid Right-Angle Plugs

Low-profile design, 7.50mm height
Enhances system airflow and provides 127.0A per linear inch

Flexible design configurations
Easily matches system power requirements

Rated for current interruption
Meets hot-plugging requirements

Rugged signal and power contacts
Reduces the potential for stubbing or damage

Hybrid power/signal design solution with 2 isolated power contacts per housing bay (top and bottom)
Allows power and return signals in the same bay for a total of 60.0A per power bay

Hybrid Vertical Receptacle

Receptacle sides mate to Molex standard LPH plug or an industry-standard 1.57mm PCB gold finger card edge
Extends design flexibility

Markets and Applications

Data/Computing

Test Equipment
Workstations
High-End Servers
Rack Servers

Telecommunications

Routers
Switches
Hubs
Cellular Base Stations

Industrial

Industrial Controls

Consumer Electronics

UAVs/Drones
Appliances
Entertainment Systems
HVAC Systems

Networking

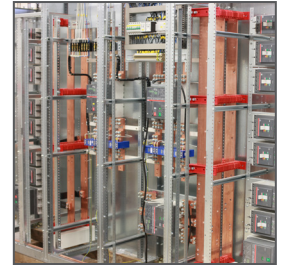
1U Rack Box
Backplanes
Power Supplies
Servers



Networking and Telecommunication



Data Center/Server Trays



High Power Bus Bar Solution Integration

Specifications

REFERENCE INFORMATION

Packaging: Tray or tube
UL File No.: E29179
CSA File No.: LR19980
Designed In: Millimeters
EU RoHS Compliant: Yes
Halogen: Low halogen
Glow Wire Compliant: No

MECHANICAL

Mating Force (max. per circuit):
Power Contacts – 6.87N (1.54 lb)
Signal Contacts – 1.08N (0.24 lb)
Un-mating Force (max per circuit):
Power Contacts – 5.88N (1.32 lb)
Signal Contacts – 0.02N (0.03 lb)
Durability: 250 cycles (receptacle and plug)

ELECTRICAL

Voltage: 250V max.
Current (at 30°C temperature rise):
Power – 30.0A max.
Signal – 1.0A max.
Contact Resistance (per contact):

	Initial	End of Life
Power (milliohms)	0.50	0.64
Signal (milliohms)	6.24	8.34

Dielectric Withstanding Voltage: 1,500V
Insulation Resistance: 5,000 Megohms min.
Current interruption:
Power – 30.0A and 48V DC
Signal – 1.0A at 30V

PHYSICAL

Housing: LCP
Contact:
Power Contacts - Copper (Cu) alloy
Signal Contacts – Phosphor Bronze
Plating:
Contact Area — Select Gold
Solder Tail Area — Tin
Underplating — Nickel
Flammability Rating: UL 94V-0
Operating Temperature: -40 to +105°C