

Switch

Standard Vertical Push Switch Series

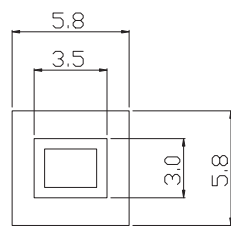
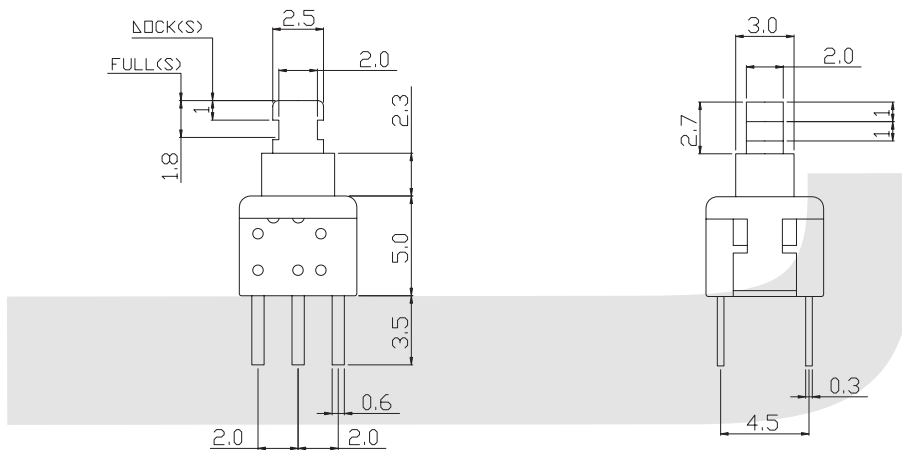
KLS7-P5.8X5.8 Standard Vertical Push Switch Series

ELECTRICAL

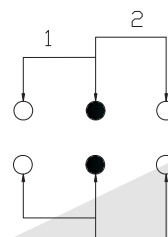
- Rating :DC30V 0.1A
- Insulation Resistance :>100MΩ DC125V
- Withstand Voltage :AC 125V 1 minute
- Contact Resistance :<100mΩ
- Soldering Temper :250°C max.3sec
- Mechanical Life :100,000 cycles
- Electrical Life :10,000 cycles
- Ambient Temper.Used :-25°C to +65°C
- Ambient Humidity Used :<85% RH
- Operating force :150±80 gf



VII



SCHEMATIC



ORDER INFORMATION

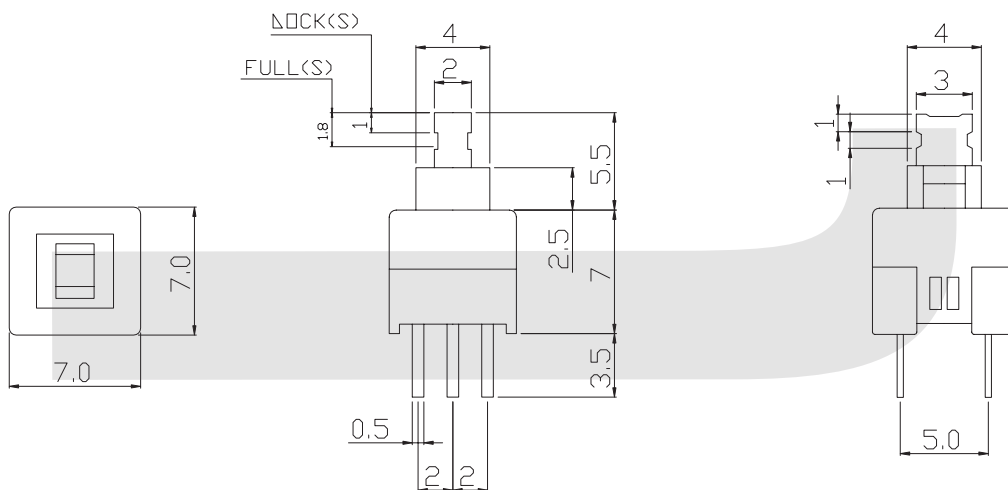
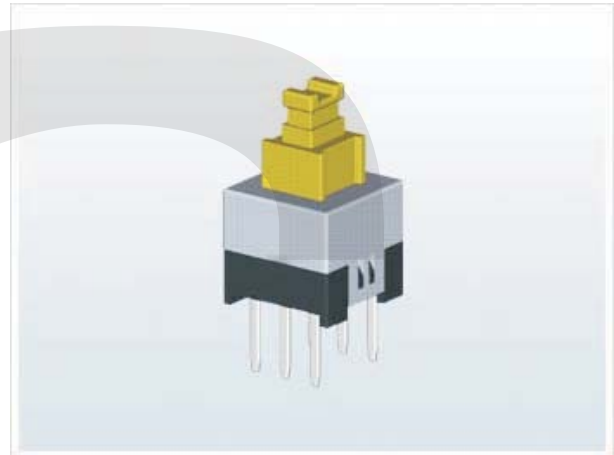
Part Number: **KLS7-P5.8x5.8 X**
Standard Vertical Push Switch Series: 0=Non Lock 1=lock

Standard Vertical Push Switch Series

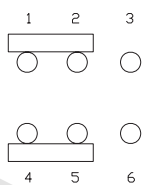
KLS7-P7.0X7.0 Standard Vertical Push Switch Series

ELECTRICAL

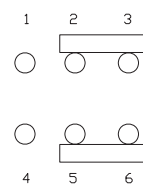
- Rating :DC30V 0.1A
- Insulation Resistance :>100MΩ DC125V
- Withstand Voltage :AC 125V 1 minute
- Contact Resistance :<100mΩ
- Soldering Temper :250°C max.3sec
- Mechanical Life :100,000 cycles
- Electrical Life :10,000 cycles
- Ambient Temper.Used :-25°C to +65°C
- Ambient Humidity Used :<85% RH
- Operating force :150±80 gf



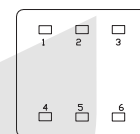
FREE



PUSH



SCHEMATIC



ORDER INFORMATION

Part Number **KLS7-P7.0x7.0 X**
 Standard Vertical Push Switch Series
 0=Non Lock 1=lock

Switch

Push Button Switch Series

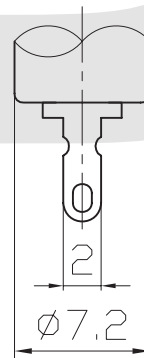
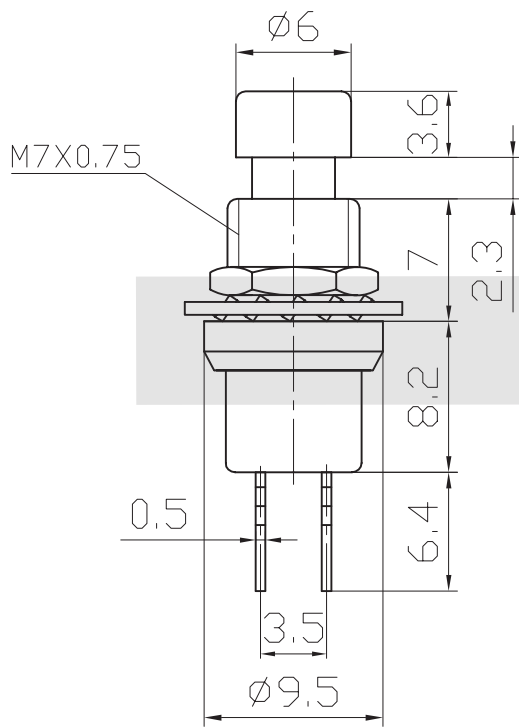
KLS7-PBS-004 Push Button Switch Series

ELECTRICAL

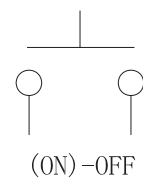
Rating: 3A 125V AC ,1A 250V AC
Contact resistance: 20mΩ Max
Insulation resistance: 100MΩ/500VDC Min
Withstanding Voltage: AC1000V/1Min
Operating Temperature: -25°C~+85°C
Electrical life: 50000 Cycles



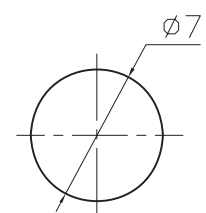
VII



Circuitry



Mounting



ORDER INFORMATION

KLS7-PBS-004 X X

Part Number

PBS-004: Push Button Switch Series

Button color: R=Red G=Green B=Black

Function: C=ON-(OFF)
D=OFF-(ON)

Switch

Push Button Switch Series

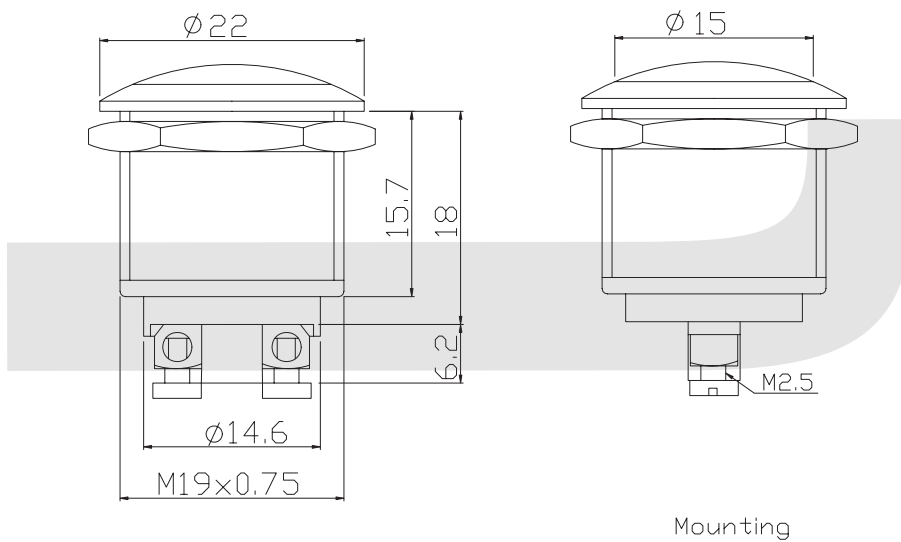
KLS7-PBS-013 Push Button Switch Series

ELECTRICAL

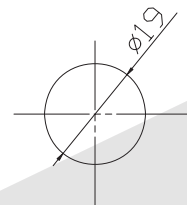
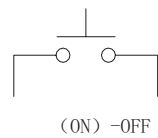
Rating: 4A 125V AC ,2A 250V AC
Contact resistance: 20mΩ Max
Insulation resistance: 100MΩ/500VDC Min
Withstanding Voltage: AC1000V/1Min
Operating Temperature: -25°C~+85°C
Electrical life: 50000 Cycles



VII



Circuitry



ORDER INFORMATION

KLS7-PBS-013 X

Part Number

PBS-013: Push Button Switch Series

Function: B=ON-OFF
C=ON-(OFF)
D=OFF-(ON)